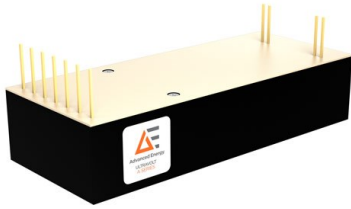


# EU REACH Declaration

247 Substances of Very High Concern Considered



## UltraVolt A Series

**Precision DC-DC Regulated Supplies for Electro-Static Detectors, Mass Spectrometers, and Photomultiplier Tubes**

---

**Issued: May 8, 2025**

**REACH: Registration, Evaluation, Authorization and Restriction of Chemicals**  
Regulation (EC) No. 1907/2006

REACH is the European Union's chemical substances regulatory framework.

Advanced Energy does not produce chemical substances or mixtures but does manufacture electrical and electronic equipment that might contain REACH substances in component parts of the final product.

---

Article 33 of REACH requires manufacturers to inform customers of Substances of Very High Concern (SVHCs), when contained in component parts of their product at concentrations above 0.1% by weight.

The REACH Candidate List of SVHCs is published online by the European Chemical Agency (ECHA). Sufficient SVHC information must be provided to the customer to allow for safe use.

Article 67 of REACH describes restrictions on the manufacture, placing on the market, and uses of certain substances on the Restricted Substances List in Annex XVII.

POPs Regulation (EU) 2024/2555 and (EU) 2024/2570 prohibits or severely restricts the production and use of Persistent Organic Pollutants (POPs) in products being placed on the market per the Stockholm Convention and Aarhus Protocol.

---

# EU REACH Declaration

## 247 Substances of Very High Concern Considered



Issued: May 8, 2025

Based on information from component part manufacturers, Advanced Energy declares the following:

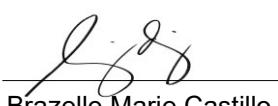
### Article 67 Declaration:

Products listed DO NOT contain any Restricted Substances in REACH Annex XVII or POPs Regulation.

### Article 33 Declaration:

Products listed contain these SVHC(s) in the REACH Candidate List above concentration of 0.1%.

SVHC Name	CAS Number	Content Concentration	Location of SVHC's
Lead	7439-92-1	1.41% - 3.70%	Die attach solder in transistors and diodes
		0.20% - 3.11%	Brass in resistors, headers, terminal turret, and standoff
		0.41% - 23.04%	Glass materials in diodes
Diboron trioxide	1303-86-2	0.11% - 0.94%	Glass materials in capacitors and diodes
Lead monoxide (lead oxide)	1317-36-8	0.10% - 22.66%	Glass materials in resistors and diodes
Lead titanium trioxide	12060-00-3	3.00%	Dielectric in capacitors
Acrylamide	79-06-1	2.90%	Marking in resistors
2,2',6,6'-Tetrabromobisphenol A	79-94-7	0.17%	Encapsulation in diodes

REACH review of product conducted under the following conditions:	European Chemicals Agency (ECHA) SVHC candidate list:	publication date: January 21, 2025	247 SVHCs
Authorized by:  Brazelle Marie Castillo Materials Compliance Engineer	Type of product manufactured, per REACH definition:	Complex article assembled from many component articles, electrical & electronic equipment	
	Subject to REACH Article 7, ECHA registration ?:	No, substances in articles < 1 tonne per year No, substances not intended to be released	
	SVHC concentration of > 0.1%, calculation method:	SVHC weight divided by weight of part containing SVHC, per European Court of Justice ruling	

### Advanced Energy Industries, Inc.

3F TechnoPlaza One Bldg., 18 Orchard Rd., Eastwood City Cyberpark, Bagumbayan 1110, Quezon City, Philippines

Issued: May 8, 2025

## **Product Declared Compliant: A Series**

Models: 1/16A, 1/8A, 1/4A, 1/2A, 1A, 2A, 4A, 6A

P/N format: *(output)A(input) - (polarity)(watt)(option)*

*output:* 1/16, 1/8, 1/4, 1/2, 1, 2, 4, 6 (kVdc)

*input:* 12, 24 (Vdc)

*polarity:* P, N

*watt:* 4, 20, 30

*option:* -E, -C, -H, -F, -M, -I5, -I10, -25PPM, -W, -WS, P3

Models: 10A, 15A, 20A, 25A

P/N format: *(output)A(input) - (polarity)(watt)(option)*

*output:* 10, 15, 20, 25 (kVdc)

*input:* 12, 24 (Vdc)

*polarity:* P, N

*watt:* 4, 15, 30

*option:* -E, -C, -H, -F, -M, -F-M, -WS, -25PPM, -AS, -Y20-nn, -TC, -P3, -Y70 (15A), -I5 (10A, 15A, 20A), -I10 (10A, 15A, 20A), -Y104(10A, 15A), -I(15A, 20A), -Y78 (15A)

Models: 30A, 35A, 40A

P/N format: *(output)A(input) - (polarity)(watt)(option)*

*output:* 30, 35, 40 (kVdc)

*input:* 12, 24 (Vdc)

*polarity:* P, N

*watt:* 4, 15, 30

*option:* -E, -C, -H, -F, -M, -F-M, -WS, -25PPM, -AS, -AP, -25PPM, -Y20-nn, -P3

Models with non-standard options:

15A24-P15-I10-Y70, 15A24-P15, I10-Y70-T10, 15A24-P30-Y75-E, 15A24-N30-Y75-E,  
15A24-P30-Y78-E, 15A24-N30-Y78-E, 10A12-P4-Y82, 10A12-N4-Y82. 15A12-P4-Y82,  
10A12-N4-Y82, 20A12-P4-Y82, 20A12-N4-Y82