



Product Service

# CERTIFICATE

No. B 18 03 13890 02914

**Holder of Certificate:** **Astec International Ltd.**

16th Floor, Lu Plaza, 2 Wing Yip Street  
Kwun Tong  
Kowloon  
HONG KONG



**Certification Mark:**



**Product:** **Power supplies  
(LED Driver)**

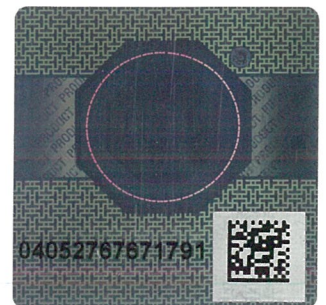
The product was tested on a voluntary basis and complies with the essential requirements. The certification mark shown above can be affixed on the product. It is not permitted to alter the certification mark in any way. In addition the certification holder must not transfer the certificate to third parties. See also notes overleaf.

**Test report no.:** 682301103108

**Valid until:** 2023-03-20

**Date,** 2018-03-21  
Page 1 of 2

  
( Rickyet Wang )





Product Service

## CERTIFICATE

No. B 18 03 13890 02914

### Model(s):

LCC250-12U-XXXX, LCC250-24U-XXXX,  
LCC250-48U-XXXX

(Where X is 4 or 7, which indicates the different shape of top metal enclosure, YYY is blank or any alphanumeric characters for marketing purpose and no impact on safety)

### Parameters:

Rated Input :	100-240VAC, 50/60Hz, 3.5A Max.
Rated Output :	+12VDC, 20.8A MAX., 250W Max. [LCC250-12U-XXXX]; +24VDC, 10.4A MAX., 250W Max. [LCC250-24U-XXXX] +48VDC, 5.2A MAX., 250W Max. [LCC250-48U-XXXX]
Method of Installation :	Built-in
Protection against Electric Shock :	SELV
tc :	85°C

### Tested according to:

EN 61347-2-13:2014/A1:2017  
EN 61347-1:2015

### Production Facility(ies):

28532, 62777