



Product Service

# CERTIFICATE

No. B 16 01 13890 02611

**Holder of Certificate: Astec International Ltd.**

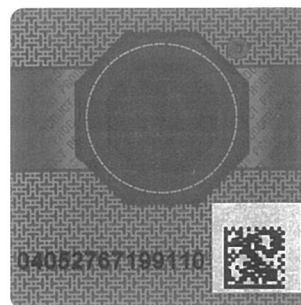
16th Floor, Lu Plaza, 2 Wing Yip Street  
Kwun Tong  
Kowloon  
HONG KONG

**Certification Mark:****Product:****Converter  
(DC-DC Converter)**

The product was tested on a voluntary basis and complies with the essential requirements. The certification mark shown above can be affixed on the product. It is not permitted to alter the certification mark in any way. In addition the certification holder must not transfer the certificate to third parties. See also notes overleaf.

Test report no.: 682301219302

Valid until: 2021-01-25

Date, 2016-01-27  
Page 1 of 2  
(Yager Bi)



**CERTIFICATE**

**No. B 16 01 13890 02611**

**Model(s):** AVD50B-48S3V3XXXXXXXXX  
 (XXXXXXXXXX is blank or any alphanumeric character representing the customer identification)

**Parameters:**

Rated DC Input :	36 - 75V, 2A
Rated DC Output :	3.3V, 15A
Construction :	Built-in
Protection Class :	Built-in component, consider in end system
Degree of Protection :	IPX0
Remarks :	<ul style="list-style-type: none"> <li>- When installing the equipment, all requirements of the mentioned standard must be fulfilled.</li> <li>- Maximum operating temperature is 70°C, 400 LFM forced airflow must be provided by the end system for ventilation.</li> <li>- These built-in converters shall be connected to a source which is insulated from the mains supply by double or reinforced insulation.</li> <li>- Basic insulation is provided between the input circuit and output circuit.</li> <li>- Clearance was evaluated for operating altitude up to 3000m above sea level.</li> <li>- These built-in converters have no in-line fuse. For safe operation, an external 5A, 125VDC, fast acting fuse must be employed as input line fuse before installation.</li> </ul>

**Tested according to:** EN 60950-1:2006/A12:2013

**Production Facility(ies):** 26247, 41329