

# Standard Power Supply for Monitor and Defibrillator

**INDUSTRY**

Medical Diagnostic & Therapy

**SOLUTION**

NCF250 Family

**APPLICATION**

Defibrillator

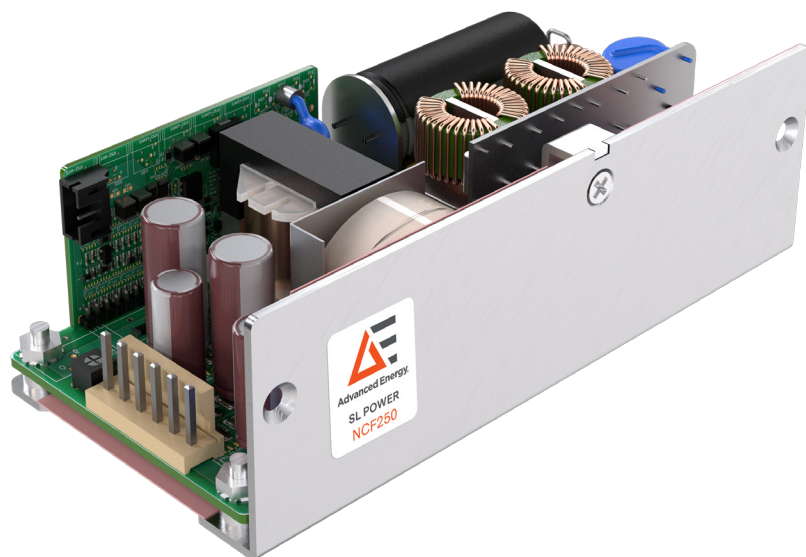
**CHALLENGE**

A leading medical device company set out to transform patient care with their innovative defibrillator, equipped with a reliable battery backup and advanced patient monitoring features.

They were in search of a single output AC-DC power supply that met stringent CF leakage current and isolation standards. To accelerate their time to market, they are looking for a solution that requires minimal customization.

The customer was seeking:

- Trusted and well-known brand in market
- High reliability & long life
- Willingness and ability to collaborate on future requirements
- Reduced lead-time for initial samples
- Open frame design with <math><10\text{ uA}</math> leakage current and 2 MOPP isolation



## SOLUTION

The medical device company chose Advanced Energy's SL Power NCF250 family, an open frame 250 W CF rated power supply. This solution provided 250 W of power in a compact size of just 2.4" x 5.0" x 1.6" and met Class B EMI and IEC60601-1-2 4th Edition EMC performance standards, ensuring easy integration into their end equipment.

As the NCF250 family of CF Rated power supplies are standard off-the-shelf products, evaluation samples were provided virtually immediately. This power supply met the customer's technical requirements, including <math><10\mu\text{A}</math> patient leakage current, 2x Means

of Patient Protection (2 x MOPP) input to output isolation, and compliance to the required EMI and EMC standards.

AE provides the following advantages:

- World-class service and consulting from technical experts
- Reduced lead-time for initial samples
- Willingness and ability to collaborate on future requirements
- Standard off-the-shelf CF rated products fully certified to medical safety standards - IEC/UL/CSA/EN60601-1

## RESULT

By choosing Advanced Energy's SL Power NCF250 family, the customer met their requirements for highly reliable AC-DC power supply. As a result of the exceptional technical support and fast turnaround of sample products, the customer will be able to accelerate their development cycle and gain regulatory approval.

## CONCLUSION

Advanced Energy's SL Power NCF250 family proved to be the perfect solution for this customer, meeting the stringent patient safety requirements essential for defibrillator products with cutting-edge power conversion technology.

The short lead time and exceptional technical support facilitated an accelerated development cycle, significantly improving speed to market. With AE's broad portfolio of highly reliable medical solutions, all high and low voltage application needs can be well-equipped to address.



For international contact information, visit [advancedenergy.com](http://advancedenergy.com).

[powersales@aei.com](mailto:powersales@aei.com)  
[productsupport.ep@aei.com](mailto:productsupport.ep@aei.com)  
+1 888 412 7832

PRECISION | POWER | PERFORMANCE | TRUST

Specifications are subject to change without notice. Not responsible for errors or omissions.  
©2025 Advanced Energy Industries, Inc. All rights reserved. Advanced Energy and AE are U.S. trademarks of Advanced Energy Industries, Inc.